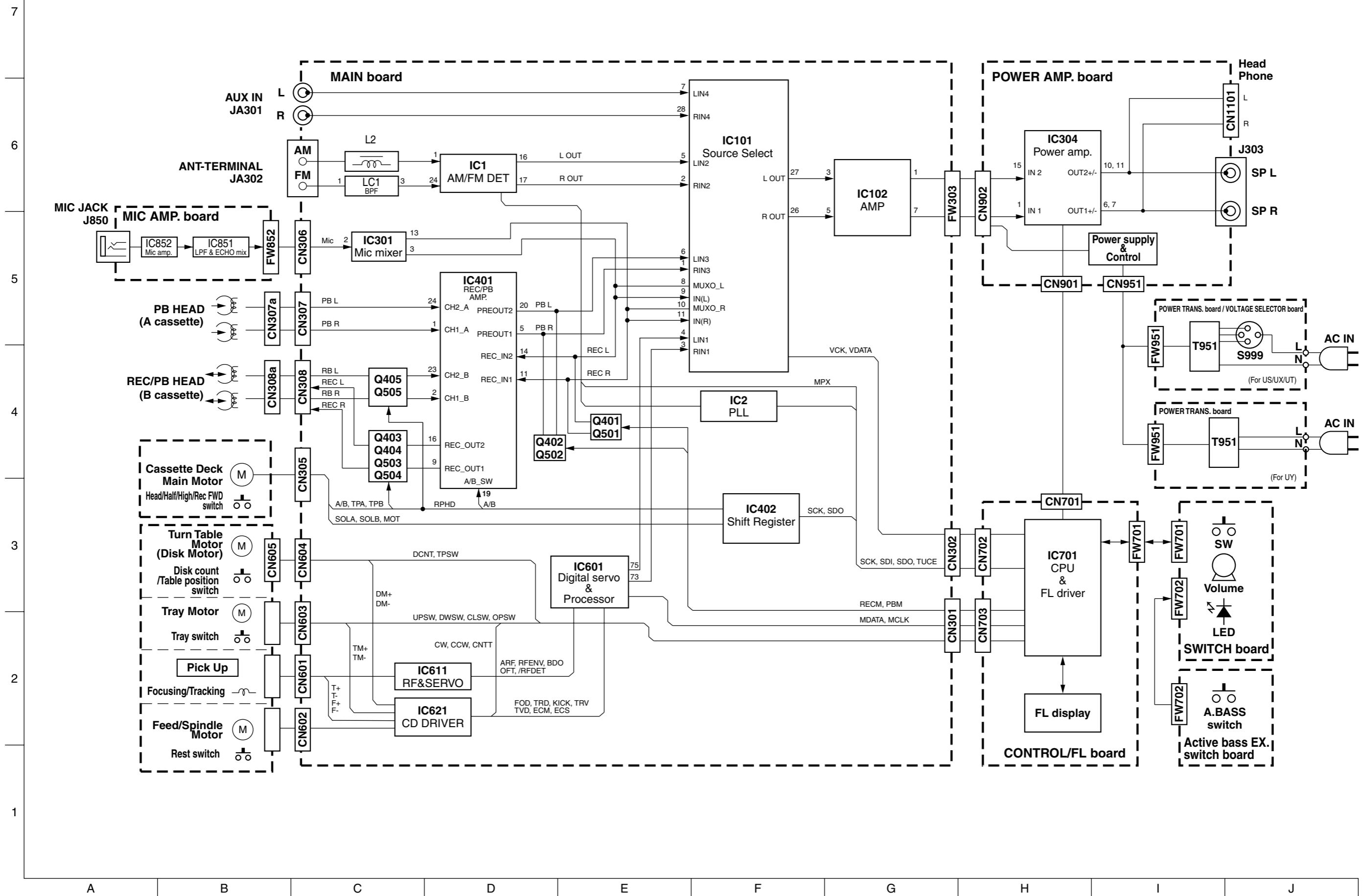


Safety Precautions

In regard with component parts appearing on the silk-screen printed side (parts side) of the PWB diagrams, the parts that are printed over with black such as the resistor (■), diode (■) and ICP (●) or identified by the "△" mark nearby are critical for safety.

When replacing them, be sure to use the parts of the same type and rating as specified by the manufacturer.
(Except the J and C version)

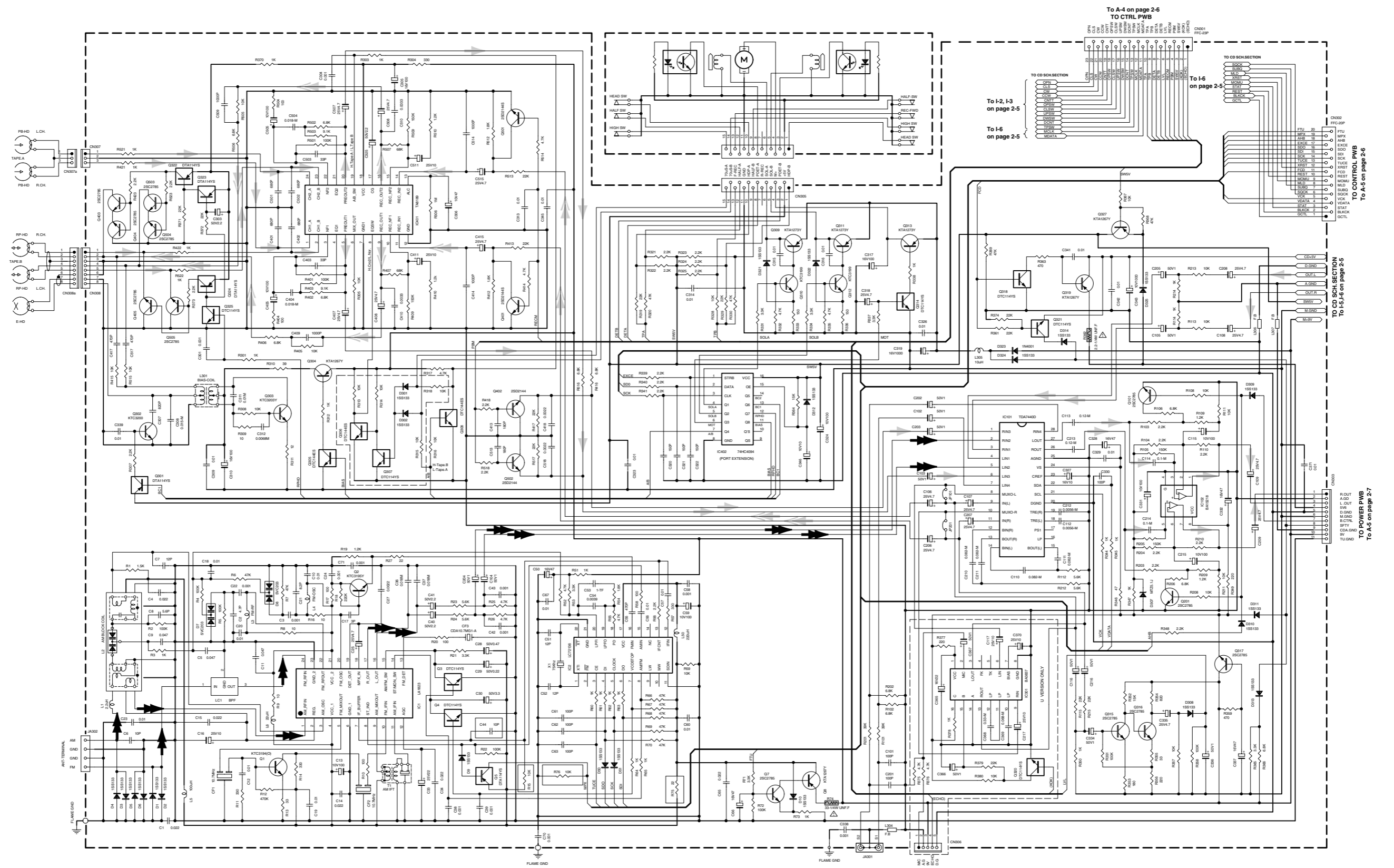
Block diagram



Standard schematic diagrams

■ Head AMP, tuner and audio section

7
6
5
4
3
2
1



- CD/TAPE PLAY SIGNAL
- TAPE REC SIGNAL
- RADIO SIGNAL
- ⚠ Parts are safety assurance parts. When replacing those parts make sure to use the specified one.

CD servo control section

7

6

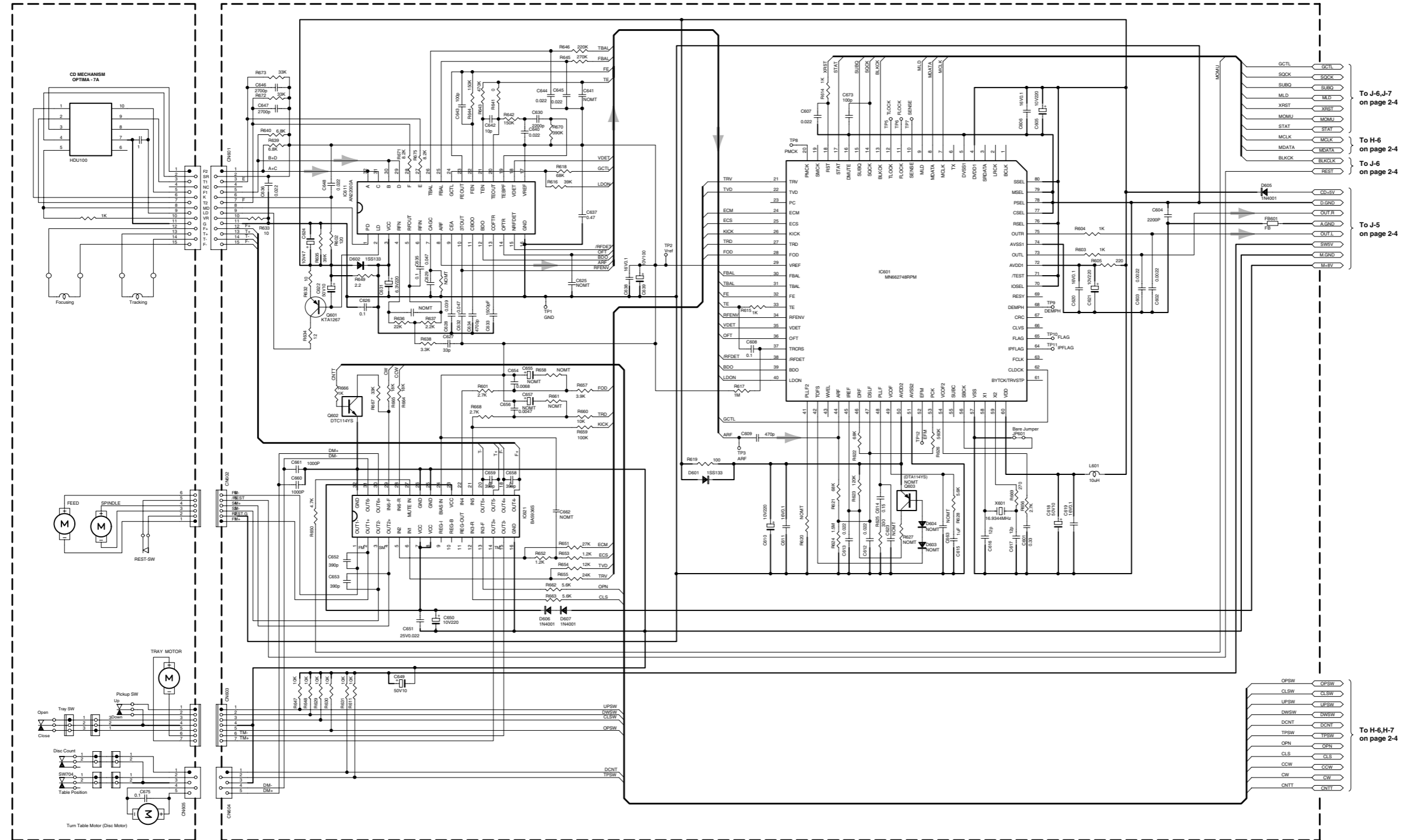
5

4

3

2

1



To J-6,J-7 on page 2-4

To H-6 on page 2-4

To J-6 on page 2-4

To J-5 on page 2-4

To H-6,H-7 on page 2-4

A

B

C

D

E

F

G

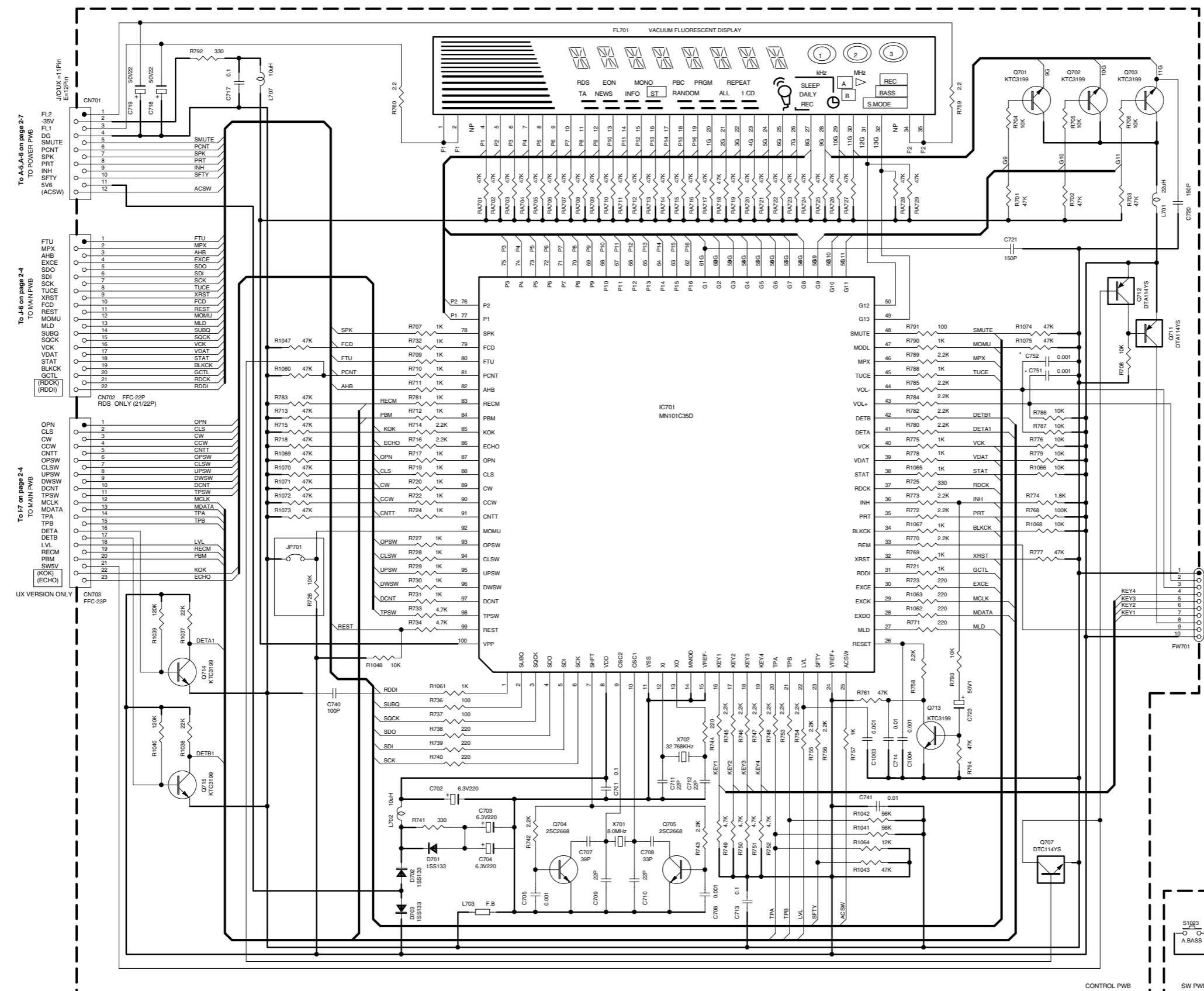
H

I

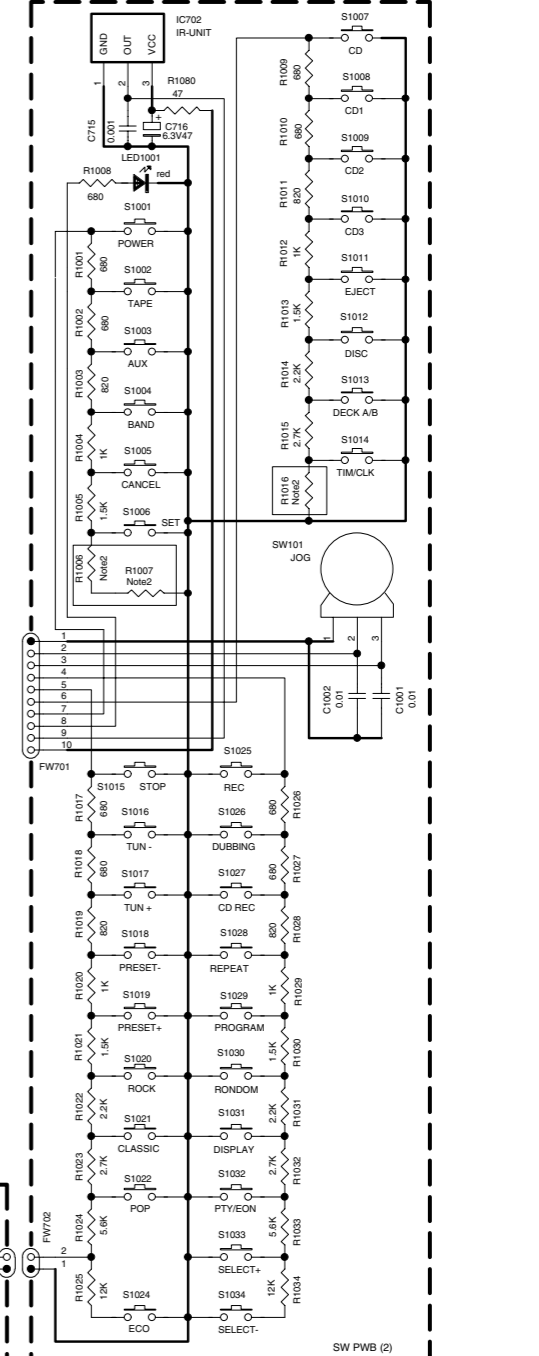
J

FL display and CPU section

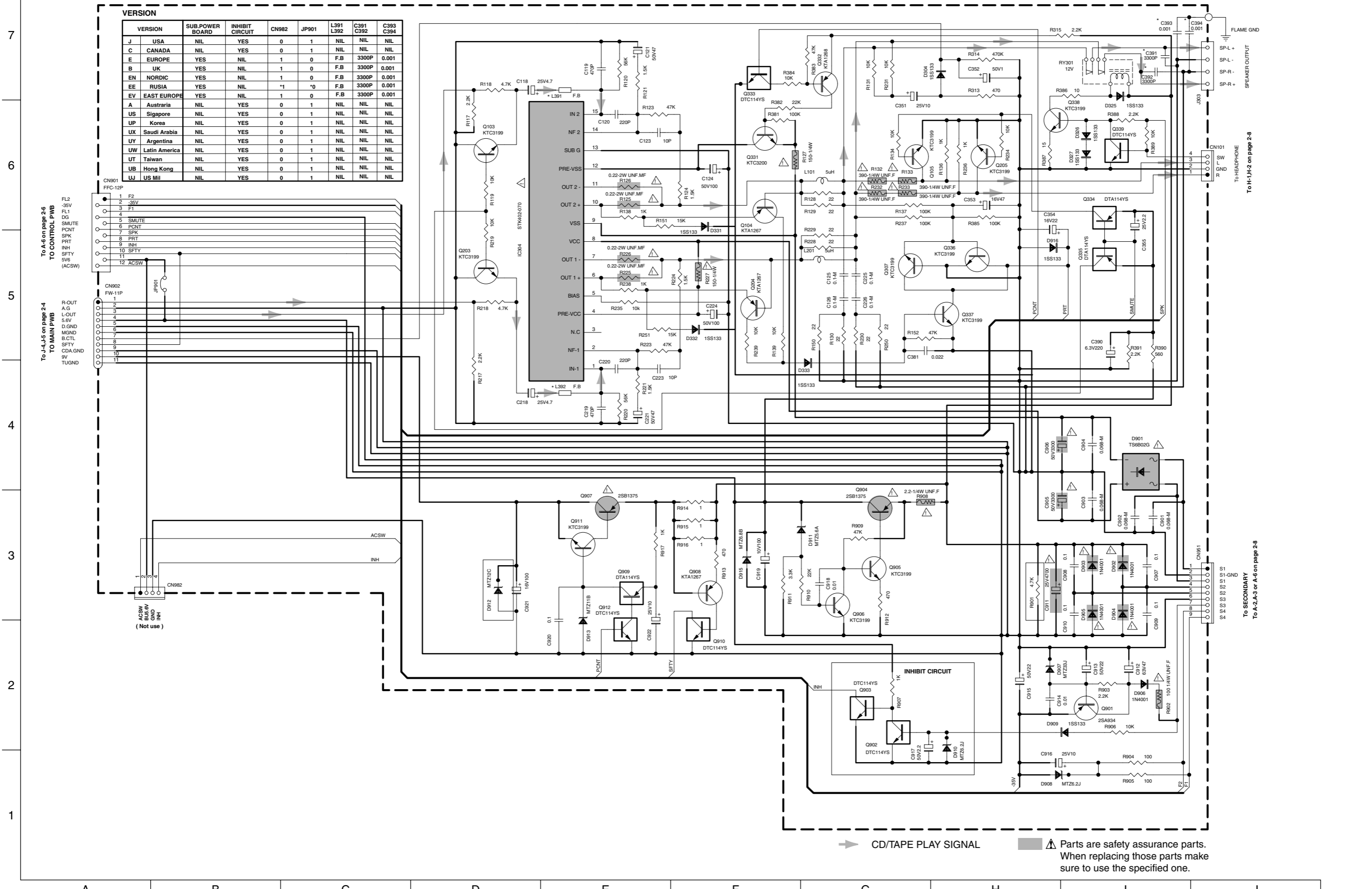
7
6
5
4
3
2
1



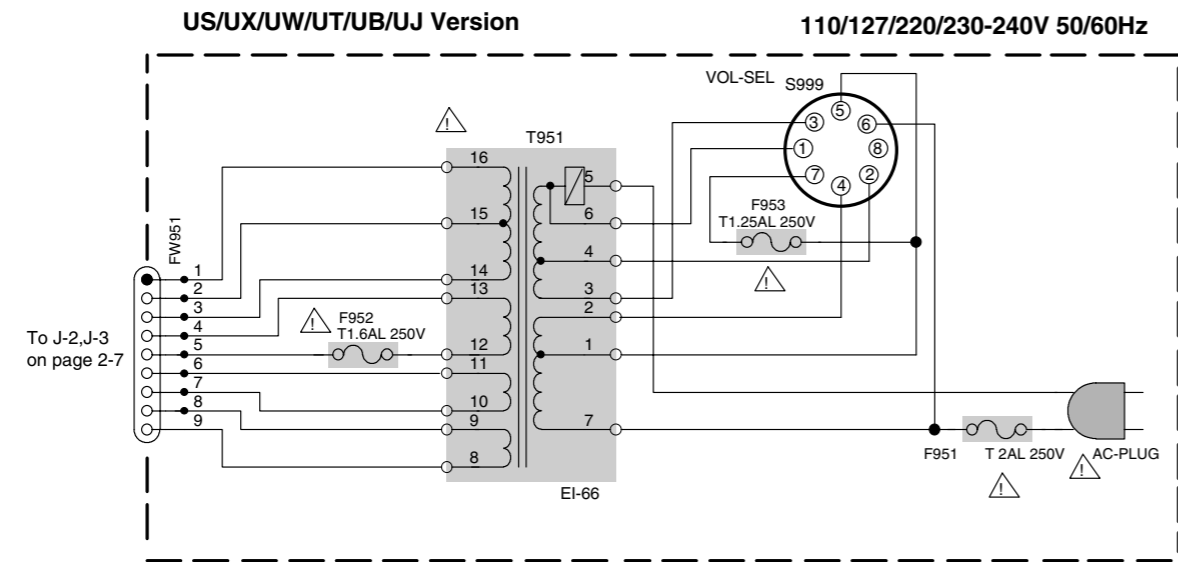
VERSION	Setting			ECO MODE		
	R1006	R1007	R1016	JP701	R726	C751 C752
J	USA	Nil	Nil	Nil	(10K)	Nil
C	CANADA	Nil	Nil	YES	(10K)	Nil
E	EUROPE	18K	8.2K	18K	Nil	10K 0.001
B	UK	18K	8.2K	18K	Nil	10K 0.001
EN	NORDIC	18K	8.2K	18K	Nil	10K 0.001
EE	RUSSIA	4.7K	820	18K	Nil	10K 0.001
EV	EAST EUROPE	18K	8.2K	18K	Nil	10K 0.001
A	Australia	10K	1.5K	Nil	Nil	(10K) Nil
US	Singapore	2.2K	JW	Nil	YES	(10K) Nil
UP	Korea	10K	1.5K	18K	YES	(10K) Nil
UX	Saudi Arabia	Nil	Nil	5.6K	YES	(10K) Nil
UY	Argentina	Nil	Nil	18K	YES	(10K) Nil
UW	Latin America	2.2K	JW	Nil	YES	(10K) Nil
UT	Taiwan	2.2K	JW	Nil	YES	(10K) Nil
UB	Hong Kong	2.2K	JW	Nil	YES	(10K) Nil
UJ	US Mil	2.2K	JW	Nil	YES	(10K) Nil



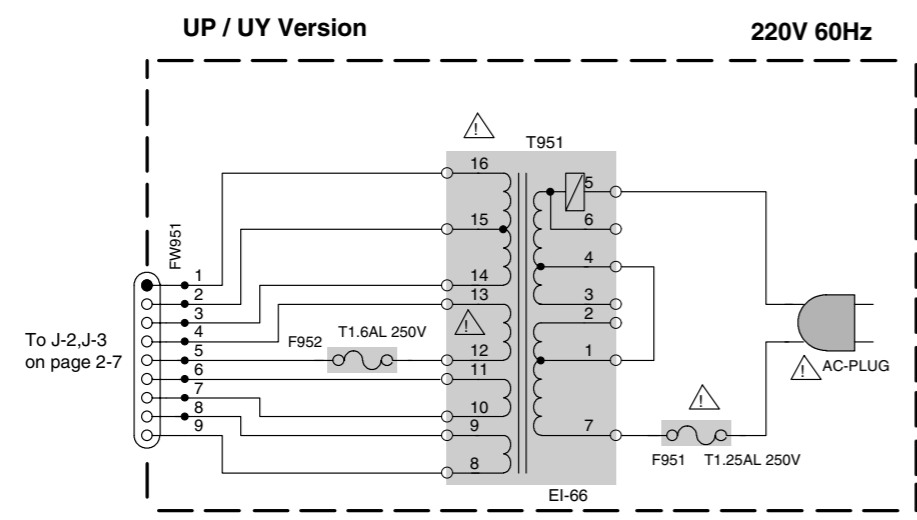
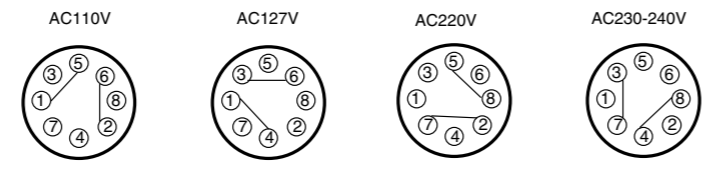
■ Main amp. and power supply section



Power transformer section



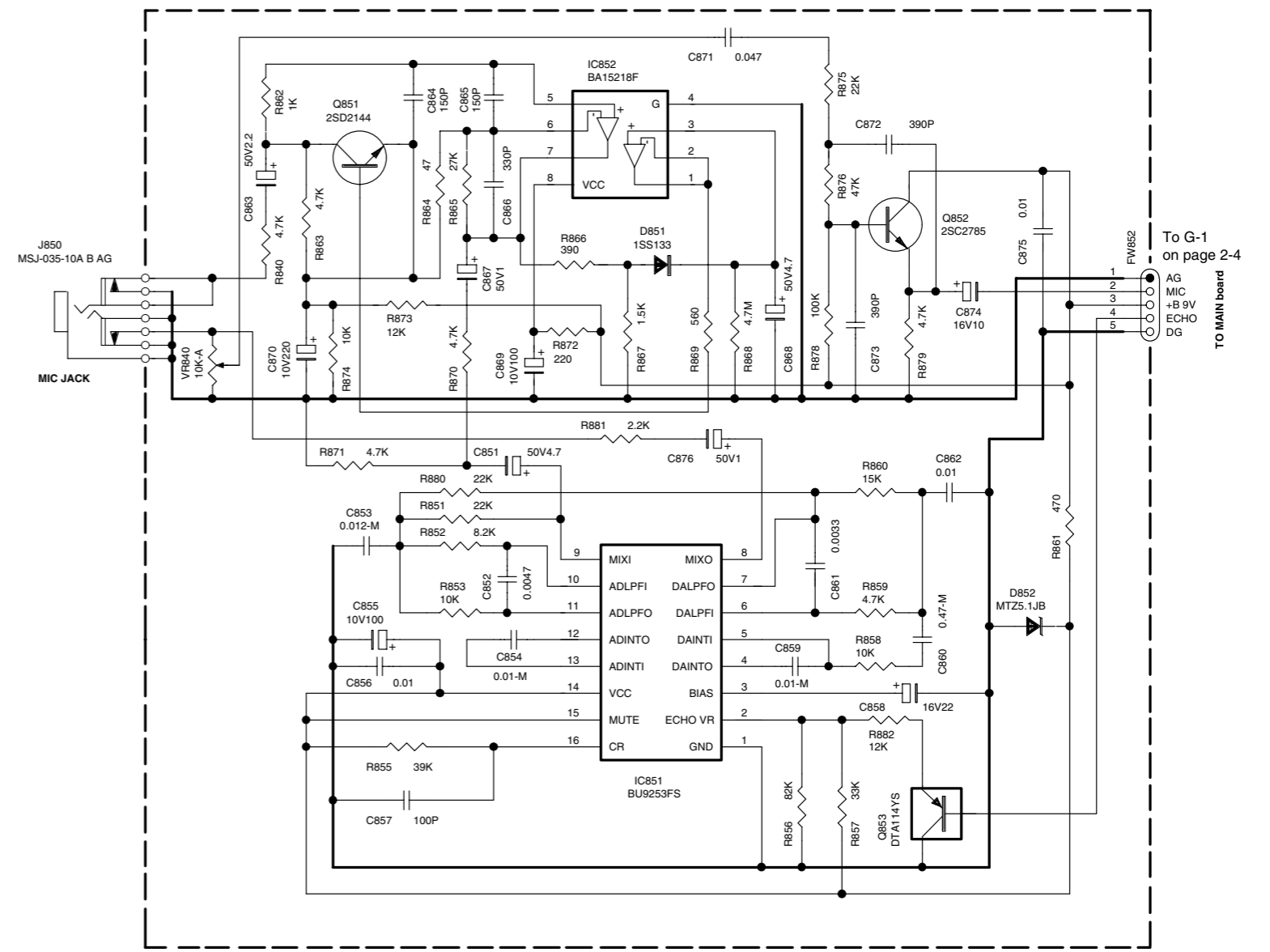
To J-2,J-3 on page 2-7



To J-2,J-3 on page 2-7

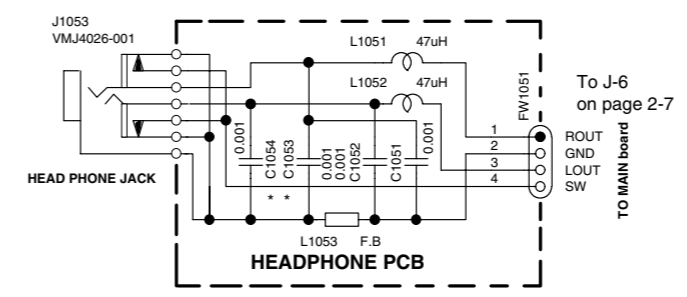
Parts are safety assurance parts. When replacing those parts make sure to use the specified one.

Mic amp. section



To G-1 on page 2-4

Head phone amp. section



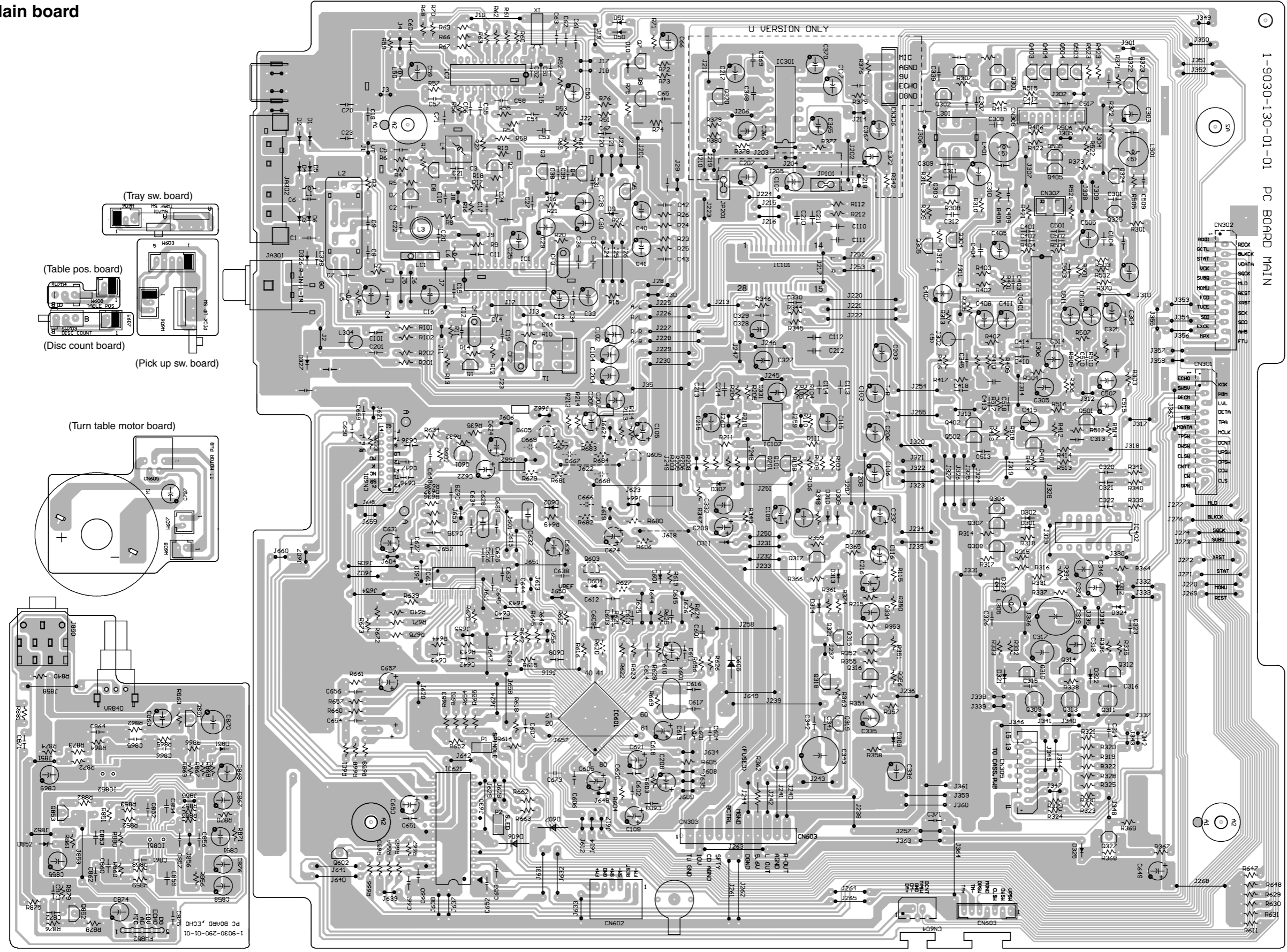
THIS PART IN CTL PCB

* REMARK:C1053,C1054 FOR (E) VERSION ONLY

Printed circuit boards

■ Main board

7
6
5
4
3
2
1



(Mic Amp. board) (Main board)

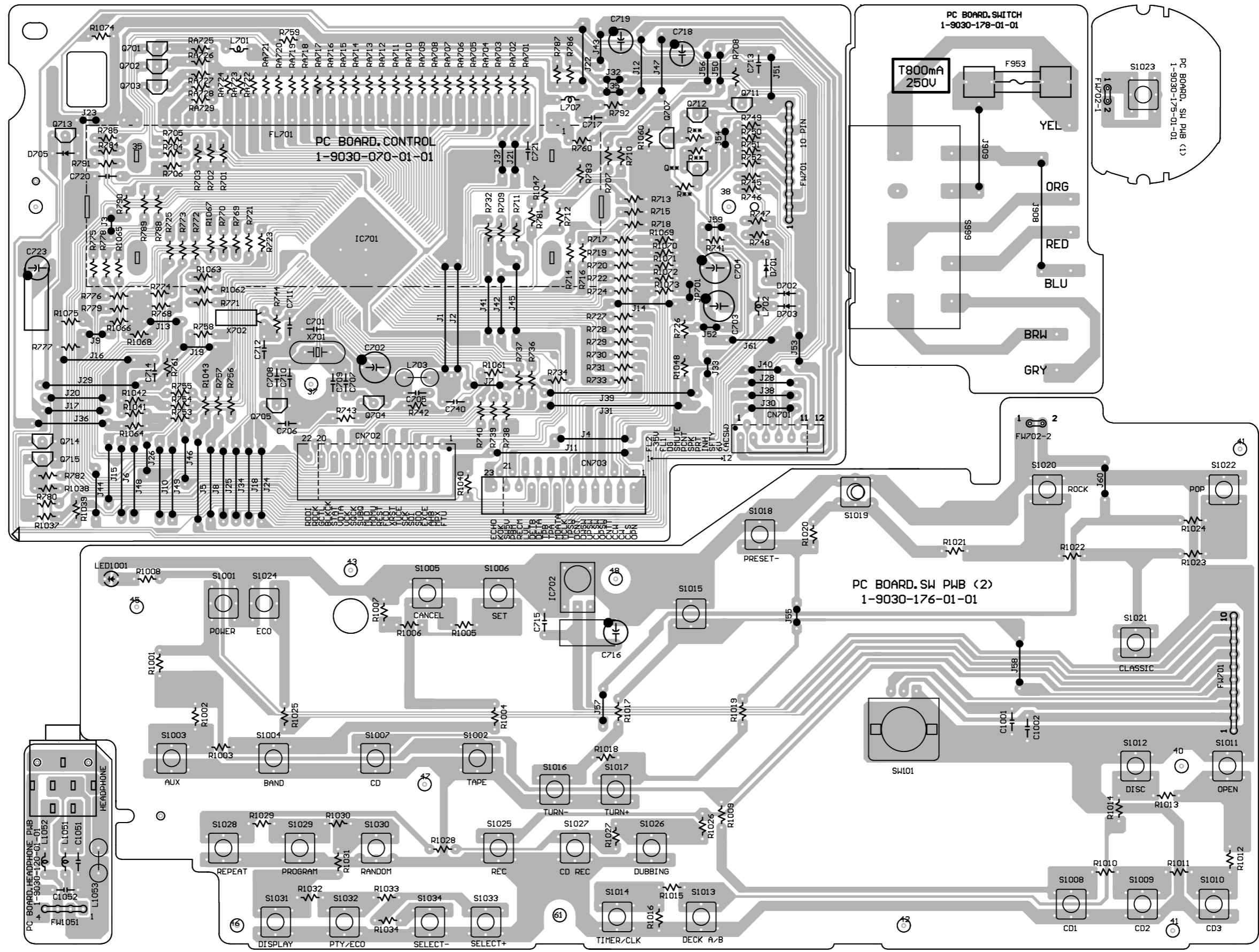
Control board

(Control/FL board)

(Voltage selector board)

(Active bass ex. switch board)

7
6
5
4
3
2
1

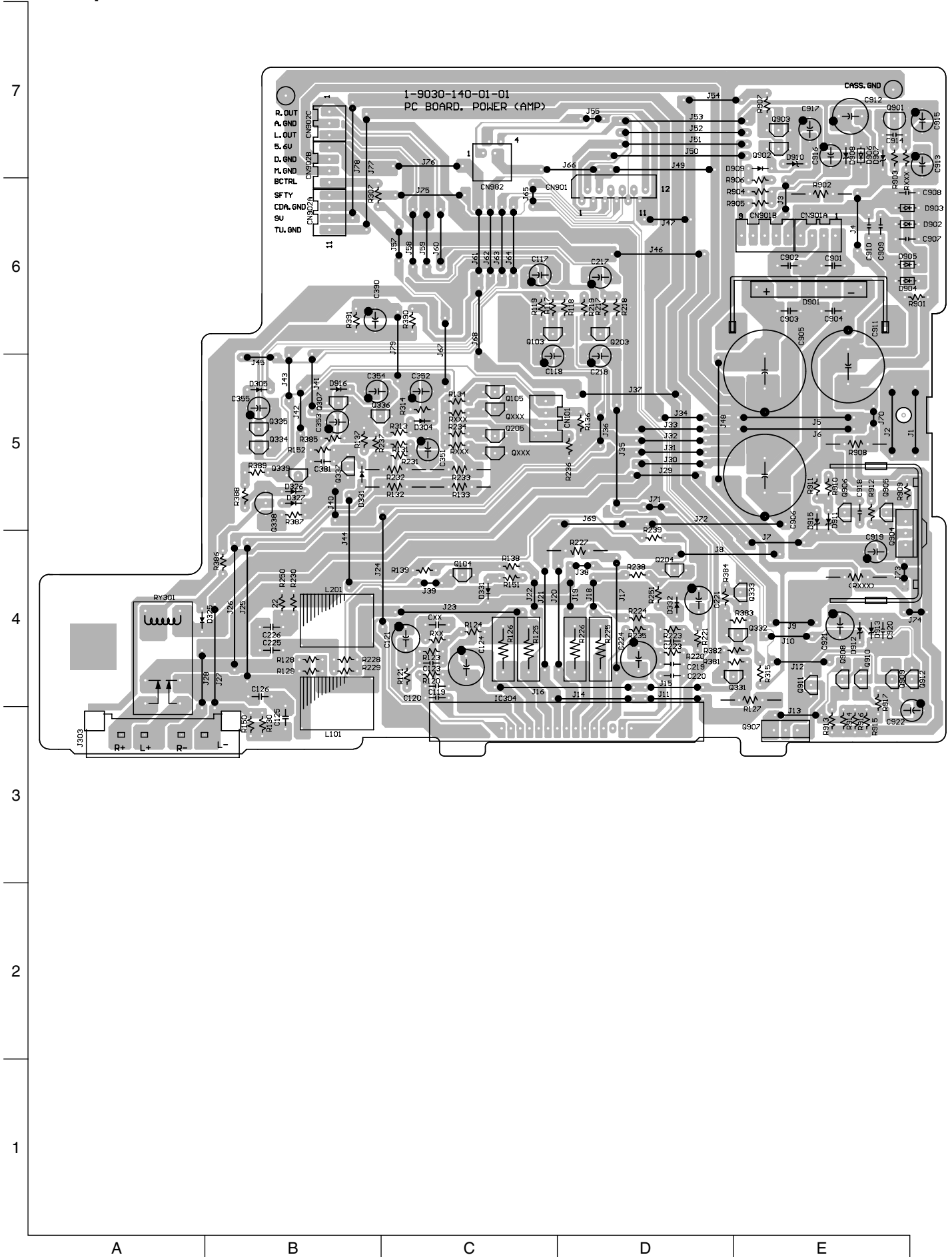


(Head phone board)

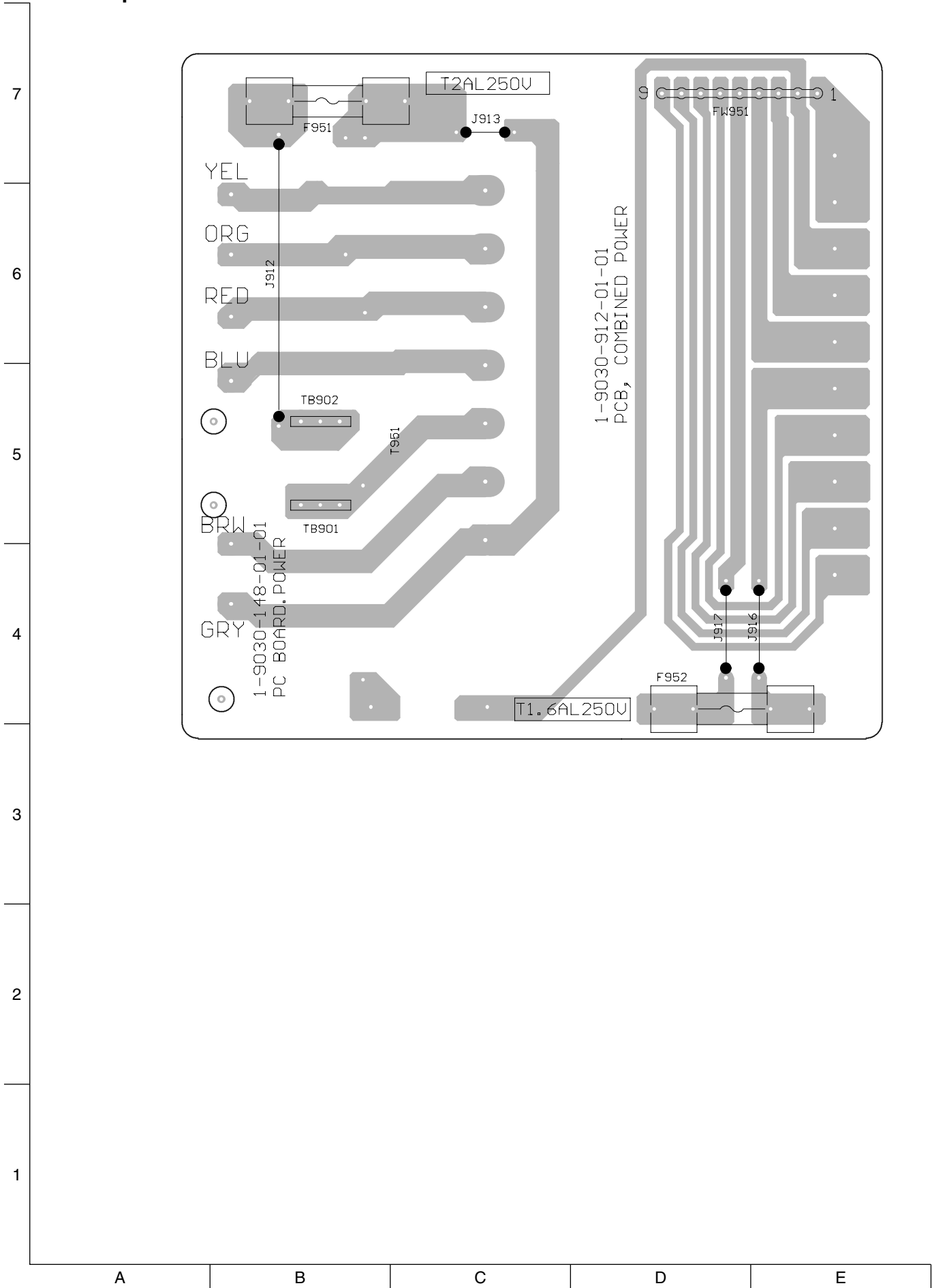
(Key switch board)

A B C D E F G H I J

■ Amp. board



■ AC power board



— MEMO —